

---

## Commander System Accessories

---



- Signal lamp adapter
- Keyboard drawer 1HE, 2HE, 3HE
- Laptop tray
- Commander fixing material

# Commander System Accessories - Keyboard Drawer



## Keyboard drawer RTS 1 (1HE)

Built-in drawer for keyboards, IP 65 for the front side

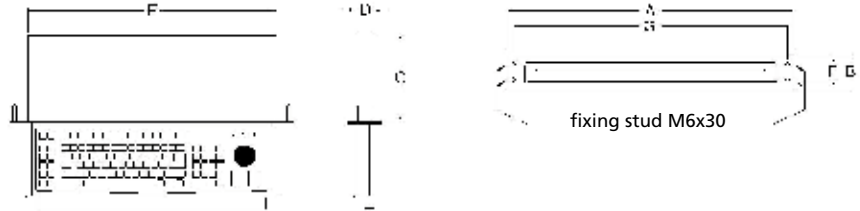
Dimensions: 483 x 44 x 160 mm

for keyboards with maximum dimensions 370 x 140 x 15 mm

Drawer without slope with magnetic latch for installing from the front with front panel (RAL 9006, white aluminium) or for installing from the inside of the enclosure

Related keyboard on request

Order No.	Type
<b>10.99 20 11</b>	Keyboard drawer RTS 1-F (with front panel)
<b>10.99 20 12</b>	Keyboard drawer RTS 1 (without front panel)



Dimensions (mm)

A	B	C	D	E	F	G
483	44	160	31	421	25	465



## Keyboard drawer RTS 2 (2HE)

Built-in drawer for keyboards, IP 65 for the front side

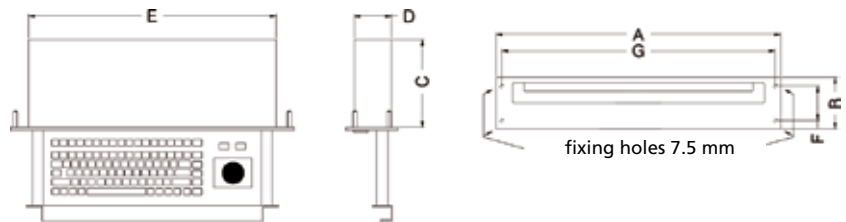
Dimensions: 483 x 88 x 150 mm

for keyboards with maximum dimensions 370 x 140 x 15 mm

Drawer without slope with magnetic latch for installing from the front with front panel (RAL 9006, white aluminium) or for installing from the inside of the enclosure

Related keyboard on request

Order No.	Type
<b>10.99 20 13</b>	Keyboard drawer RTS 2-F (with front panel)
<b>10.99 20 14</b>	Keyboard drawer RTS 2 (without front panel)



Dimensions (mm)

A	B	C	D	E	F	G
483	88	150	64	421	58	465

# Commander System Accessories - Keyboard Drawer



### Keyboard drawer RTS 3 (with 20° slope)

Built-in drawer for keyboards, IP 65 for the front side

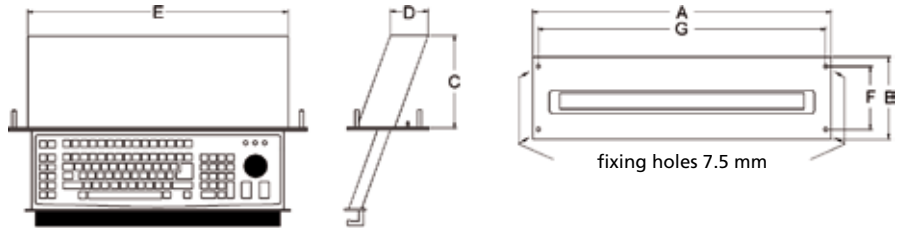
Dimensions: 483 x 132.5 x 150 mm

for keyboards with maximum dimensions 340 x 170 x 15 mm

Drawer with 20° slope with magnetic latch for installing from the front with front panel (RAL 9006, white aluminium) or for installing from the inside of the enclosure

Related keyboard on request

Order No.	Type
<b>10.99 20 03</b>	Keyboard drawer RTS 3-F (20° slope with front panel)
<b>10.99 20 04</b>	Keyboard drawer 3HE (20° slope without front panel)



Dimensions (mm)

A	B	C	D	E	F	G
483	132.5	150	61	421	101.5	465



### Keyboard drawer RTS 4

Built-in drawer for keyboards, IP 65 for the front side

Dimensions: 560 x 123 x 203 mm

for keyboards with maximum dimensions 465 x 170 x 15 mm

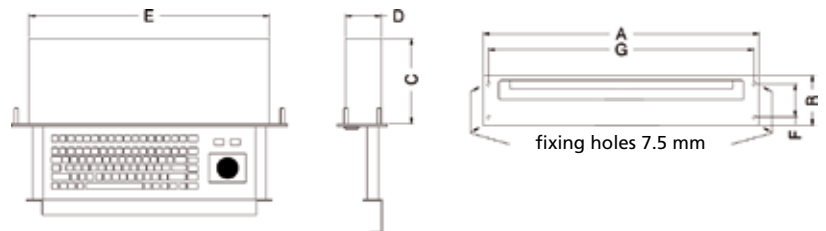
Drawer with magnetic latch

Mouse pad tray can be extended to the right or left

for installing from the front with front panel (RAL 9006, white aluminium)

including plastic Cherry keyboard G85-23100 DE-2 and mouse Cherry M 5450 and integrated USB port

Order No.	Type
<b>10.99 20 08</b>	Keyboard drawer RTS 4-F (with front panel)



Dimensions (mm)

A	B	C	D	E	F	G
560	123	203	86	512	103	543

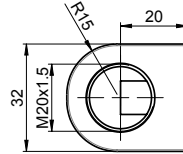
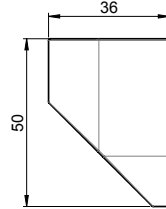
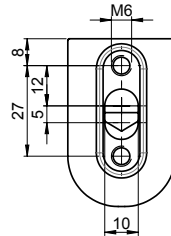
# Commander System Accessories - Adapter Signal Lamps



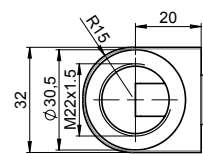
Connection element for suspension systems, control panels and wall cabinets

Adapter signal lamp with M20x1.5mm connection  
Order No. **49.00 01 01**

Adapter signal lamp with M22x1.5mm connection  
Order No. **49.00 01 02**



**49.00 01 01**



**49.00 01 02**

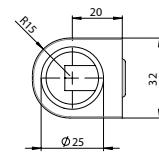
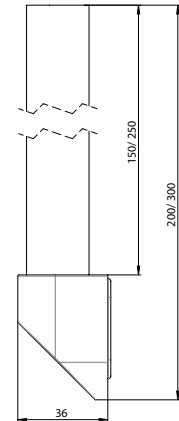
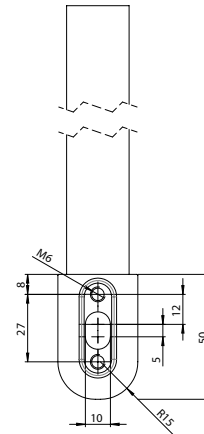


Connection element for suspension systems, control panels and wall cabinets

Adapter signal lamp with  $\varnothing$  25mm pipe

Order No. **49.00 01 03** (L = 250mm)

**49.00 01 04** (L = 150mm)

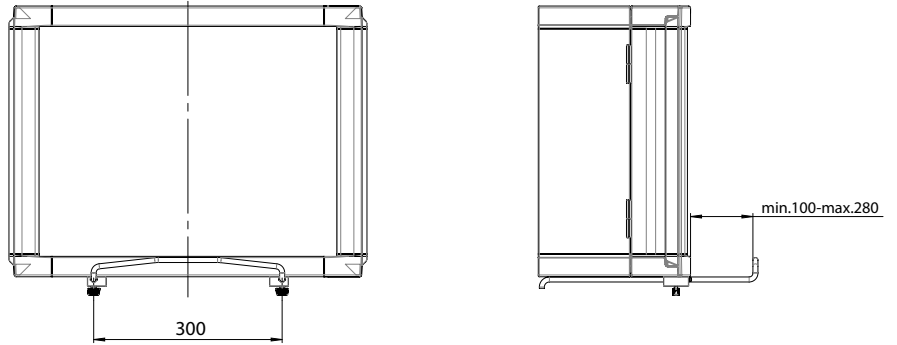


# Commander System Accessories



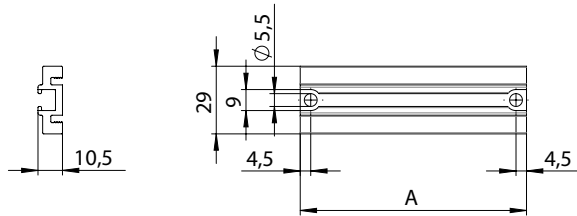
**Laptop tray**  
 for mounting to Commander systems SL 3000 and SL 4000  
 Retractable bracket with fastening elements  
 Surface width: 300 mm; maximum length when extended 280 mm

Order No. **20.99 00 10**



**Fixing plates**  
 for mounting components in Commander

Order No.	Type	Dimensions A
<b>20.10 91 01</b>	for SL 4000 profile 2	97
<b>20.10 91 02</b>	for SL 4000 profile 3	157
<b>20.10 91 03</b>	for SL 4000 profile 4	96.3
<b>20.10 91 99</b>	Individual length	



**Commander grounding plate**  
 Grounding plate installation in Commander SL 4000 (profiles 1 and 4)

Order No. **20.99 00 01**

