



- Modern enclosure system for small controls and touch panels
- 4 standard sizes; individual dimensions due to profile system design
- Version with handle frame, as built-in system or flush front frame, can be adapted to ROSE suspension systems GTS and GT 48/2

Included in delivery

Enclosure body including Corners, seals, mounting material, rear panel or door, front panel mounting set and front panel

Technical Data

Material:

Profile: DIN EN 573 EN AW-ALMgSi

Corner castings: DIN ENAC-ALSi12Cu 1(Fe)

Seal:

Corners: PE seal

Front panel / rear panel: CR seal

Paintwork / surface:

powder-coated

Colour:

Profile: RAL 7035, light grey

Corner elements: optional RAL 7035, light grey

Special colour on request

Protection class:

IP 65 in accordance with EN 60529

Thermal resistance:

-30°C to +80°C

Product Overview

Order No.	Type	Dimensions	Description
20.70 00 01	ComOne 1	260 x 160 x 142.5	Flush front frame
20.70 00 02	ComOne 2	230 x 330 x 142.5	Flush front frame
20.70 00 03	ComOne 3	230 x 200 x 142.5	Flush front frame
20.70 00 04	ComOne 4	310 x 400 x 142.5	Flush front frame
20.70 00 99	ComOne 99	individual size	Flush front frame
20.70 01 01	ComOne 101	260 x 160 x 142.5	Side handle
20.70 01 02	ComOne 102	230 x 330 x 142.5	Side handle
20.70 01 03	ComOne 103	230 x 200 x 142.5	Side handle
20.70 01 04	ComOne 104	310 x 400 x 142.5	Side handle
20.70 01 99	ComOne 199	individual size	Side handle
20.70 02 01	ComOne 201	260 x 160 x 142.5	Built-in version
20.70 02 02	ComOne 202	230 x 330 x 142.5	Built-in version
20.70 02 03	ComOne 203	230 x 200 x 142.5	Built-in version
20.70 02 04	ComOne 204	310 x 400 x 142.5	Built-in version
20.70 02 99	ComOne 299	individual size	Built-in version



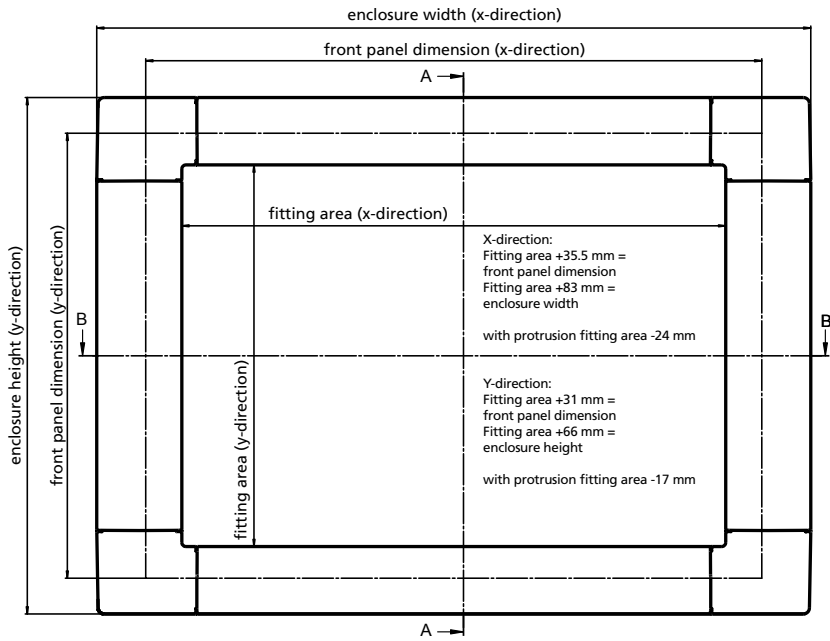
Version with side handles



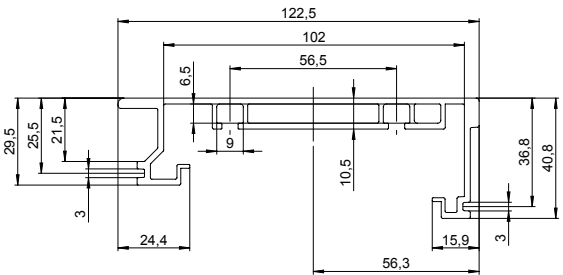
Version with flush front frame



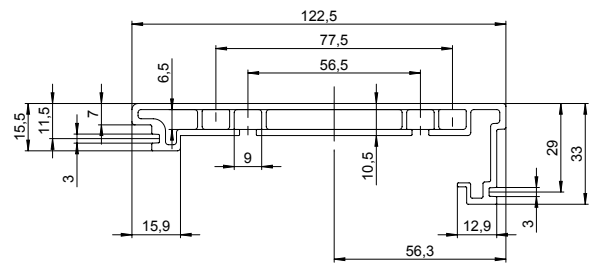
Version as built-in variant



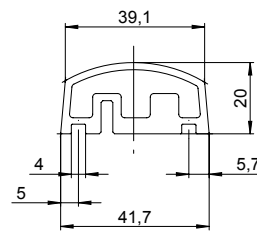
Vertical body profile



Horizontal body profile



Vertical frame profile



Horizontal frame profile

